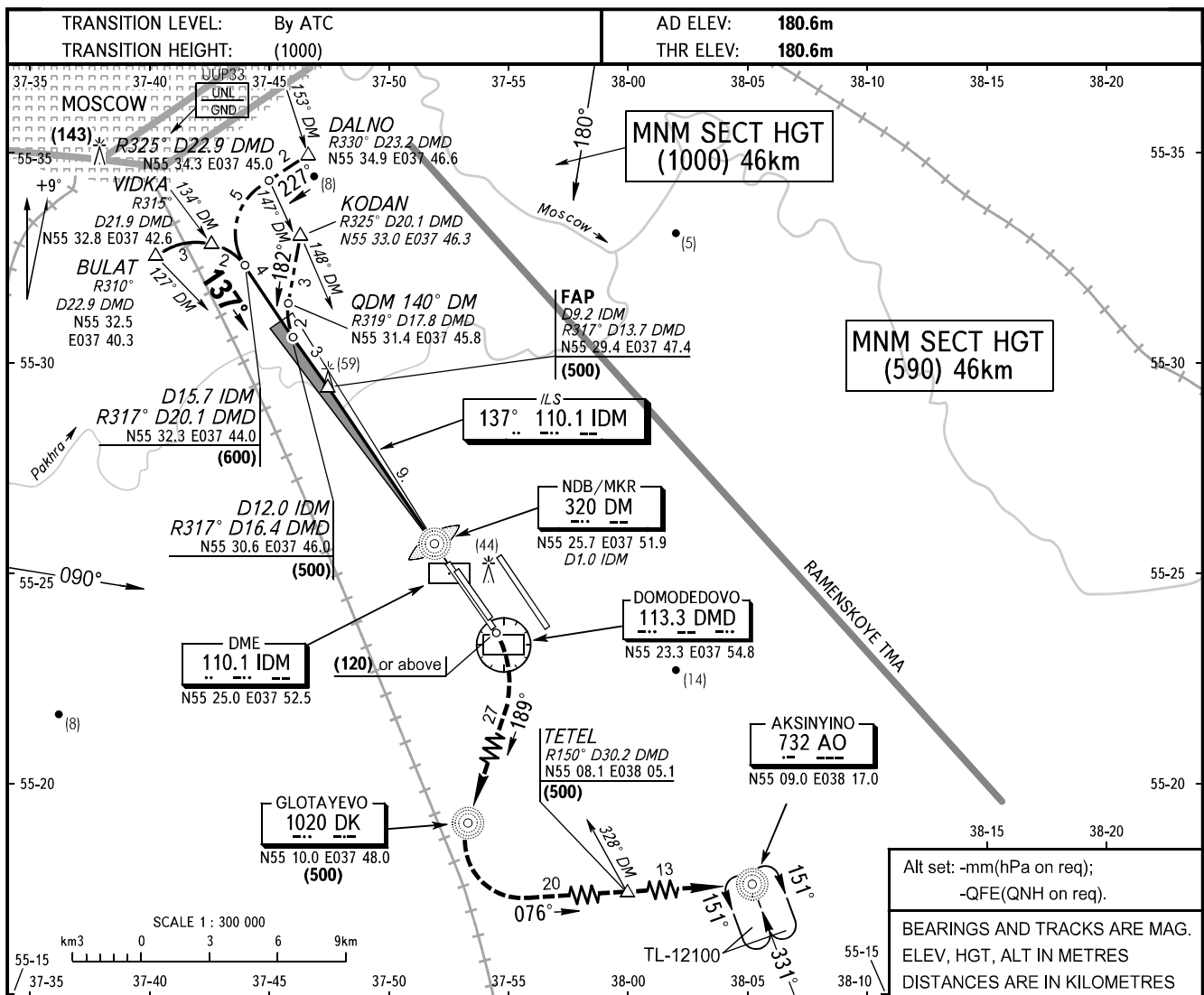


**INSTRUMENT
APPROACH
CHART - ICAO**

TOWER 1 **118.6 (119.450R)**
DOMODEDOVO RADAR **127.7 (119.450R)**

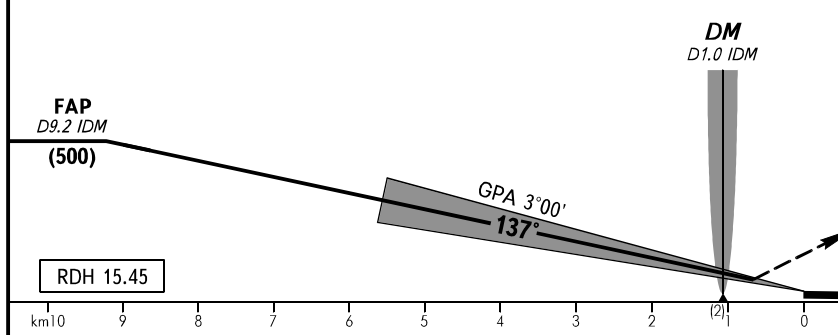
**MOSCOW, RUSSIA
DOMODEDOVO
ILS DME RWY 14R**



Alt set: -mm(hPa on req);
-QFE(QNH on req).

BEARINGS AND TRACKS ARE MAG.
ELEV, HGT, ALT IN METRES
DISTANCES ARE IN KILOMETRES

MISSED APPROACH
After passing NDB/MKR 320 DM, climb straight ahead to (120) or above, turn right onto track 189° MAG, proceed to Glotayevo NDB climbing to (500), after passing Glotayevo NDB turn left onto track 076° MAG and proceed to NCRP TETEL, further climbing to (600) shall be carried out after passing NCRP TETEL and proceed to Aksinyino NDB or by ATS unit instruction.



OCA/H		A	B	C	D
Straight-in	CAT I	223(42)	226(45)	229(48)	233(52)
	CAT II	196(15)	200(19)	203(22)	207(26)
Approach	CAT IIIA	DA(H) 196(15) RVR 200m			

WARNING:
1. After climbing to (200) immediately contact DOMODEDOVO Radar on 127.7 (119.450R).
2. The length of the intermediate approach for RWY 14R is 2.7km, that is less than standard.

GROUND SPEED	km/h	150	180	210	240	270	300	330	360	390	420	450
FAP-THR 9220m	min:s	3.41	3.04	2.38	2.18	2.03	1.51	1.41	1.32	1.25	1.19	1.14
RATE OF DESCENT	m/s	2.2	2.6	3.1	3.5	3.9	4.3	4.7	5.2	5.6	6.1	6.5