

BALAD, IRAQ

RNAV (GPS) RWY 14

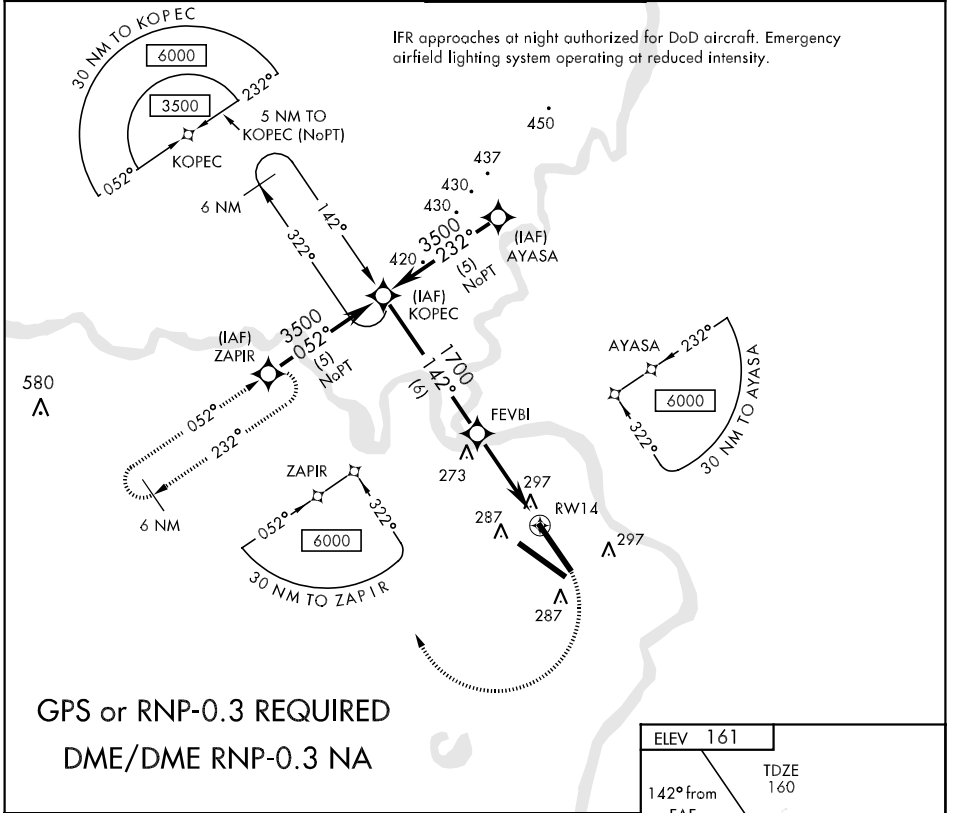
APCH CRS	Rwy Idg	11,490
142°	TDZE	160
	Arpt Elev	161

AL-3163 [USA]

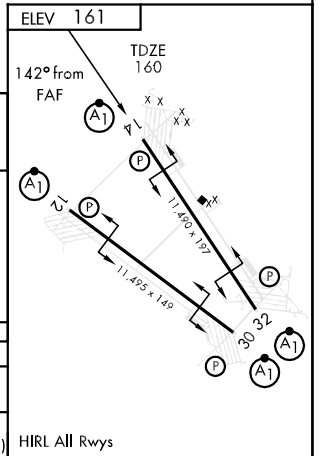
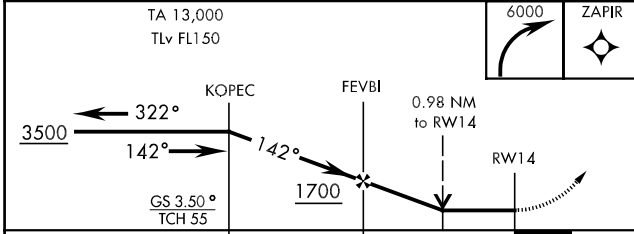
BALAD SOUTHEAST (ORBD)

ALSIF-1	MISSED APPROACH: Climbing right turn to 6000 direct ZAPIR WPT and hold.		
---------	---	--	--

ATIS 247.2	BALAD SOUTHEAST APP CON 131.9 255.8	BALAD SOUTHEAST TOWER 119.875 368.4	GND CON 128.75 301.125	PAR
----------------------	---	---	----------------------------------	-----



GPS or RNP-0.3 REQUIRED
DME/DME RNP-0.3 NA



	TA 13,000 TLv FL150	6000	ZAPIR
CATEGORY	A	B	C
S-14	600-1600m 440 (500-1600m)		600-2000m 440 (500-2000m)
CIRCLING	660-1600m 499 (500-1600m)	660-2400m 499 (500-2400m)	720-3200m 559 (600-3200m)

HIRL All Rwys

BALAD, IRAQ
Orig 06243

33° 56'N-44° 22'E

BALAD SOUTHEAST (ORBD)

RNAV (GPS) RWY 14

Effective 28 SEP 2006 - 26 OCT 2006