

BALAD, IRAQ

RNAV (GPS) RWY 32

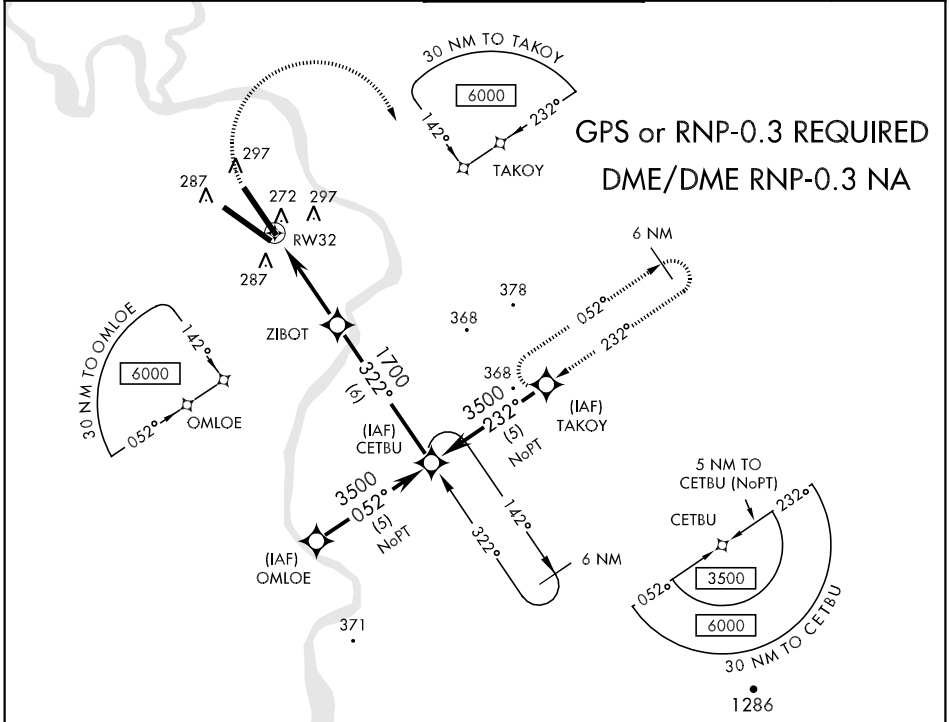
APCH CRS	Rwy Idg	11,490
322°	TDZE	160
	Arpt Elev	161

AL-3163 [USA]

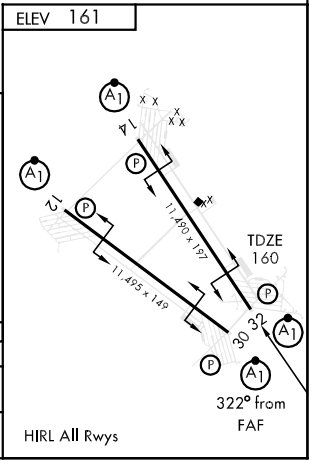
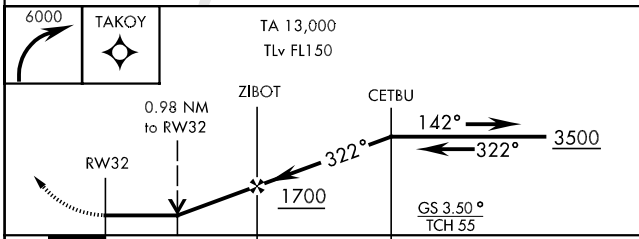
BALAD SOUTHEAST (ORBD)

MISSED APPROACH: Climbing right turn to 6000 direct TAKOY WPT and hold.

ATIS 247.2	BALAD SOUTHEAST APP CON 131.9 255.8	BALAD SOUTHEAST TOWER 119.875 368.4	GND CON 128.75 301.125	PAR
----------------------	---	---	----------------------------------	-----



IFR approaches at night authorized for DoD aircraft. Emergency airfield lighting system operating at reduced intensity.



CATEGORY	A	B	C	D
S-32	580-1600m 420 (500-1600m)		580-2000m 420 (500-2000m)	
CIRCLING	660-1600m 499 (500-1600m)		660-2400m 499(500-2400m)	720-3200m 559(600-3200m)

BALAD, IRAQ
Orig 06243

33°56'N-44°22'E

BALAD SOUTHEAST (ORBD)

RNAV (GPS) RWY 32

Effective 28 SEP 2006 - 26 OCT 2006