

BALAD, IRAQ

TACAN or VOR/DME RWY 30

VORTAC BLD 114.6 Chan 93	APCH CRS 315°	Rwy Idg 11,495 THRE 161 Arpt Elev 161
--	-------------------------	--

AL-3163 [USAF]

BALAD SOUTHEAST (ORBD)

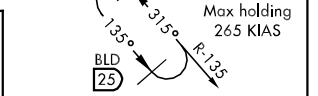
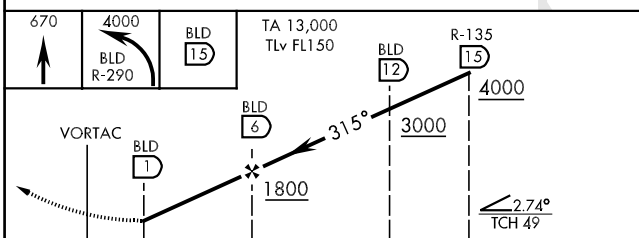
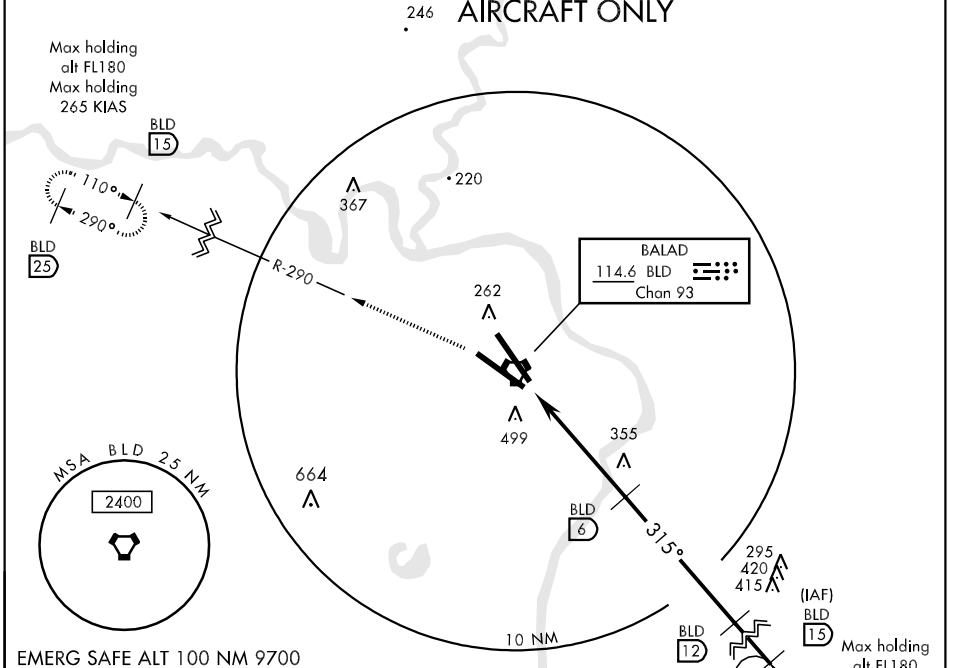
⚠ * Non-Standard Lighting. Weather minimum based on NO-LIGHT criteria.
** Circling E of Rwy 14-32 not authorized.



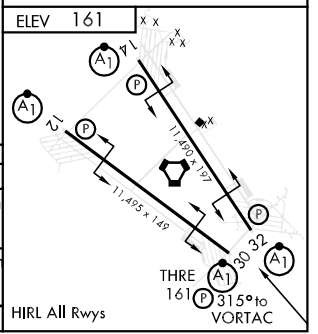
MISSED APPROACH: Climb to 4000, passing 670, turn left to intercept BLD R-290 to 15 DME and hold.

ATIS 247.2	BALAD SOUTHEAST APP CON 131.9 255.8	BALAD SOUTHEAST TOWER 119.875 368.4	GND CON 128.75 301.125	PAR
----------------------	---	---	----------------------------------	-----

**FOR USE BY MILITARY AIRCREWS
OR AUTHORIZED CIVIL CONTRACT
AIRCRAFT ONLY**



CATEGORY	A	B	C	D	E
S-30 *	650-1600m 489 (500-1600m)		650-2000m 489 (500-2000m)	650-2400m 489 (500-2400m)	650-2800m 489 (500-2800m)
CIRCLING **	800-1600m 639 (700-1600m)		900-3200m 739 (800-3200m)	900-3600m 739 (800-3600m)	1000-4800m 839 (900-4800m)
S-PAR 30	360-800m		200 (200-800m)	GS 3.00°	



BALAD, IRAQ
Orig 06243

33°56'N-44°22'E

BALAD SOUTHEAST (ORBD)

TACAN or VOR/DME RWY 30

Effective 28 SEP 2006 - 26 OCT 2006