

BALAD, IRAQ

TACAN RWY 14

VORTAC BLD 114.6 Chan 93	APCH CRS 147°	Rwy Idg 11,490 THRE 159 Arpt Elev 161
--	-------------------------	--

AL-3163 [USAF]

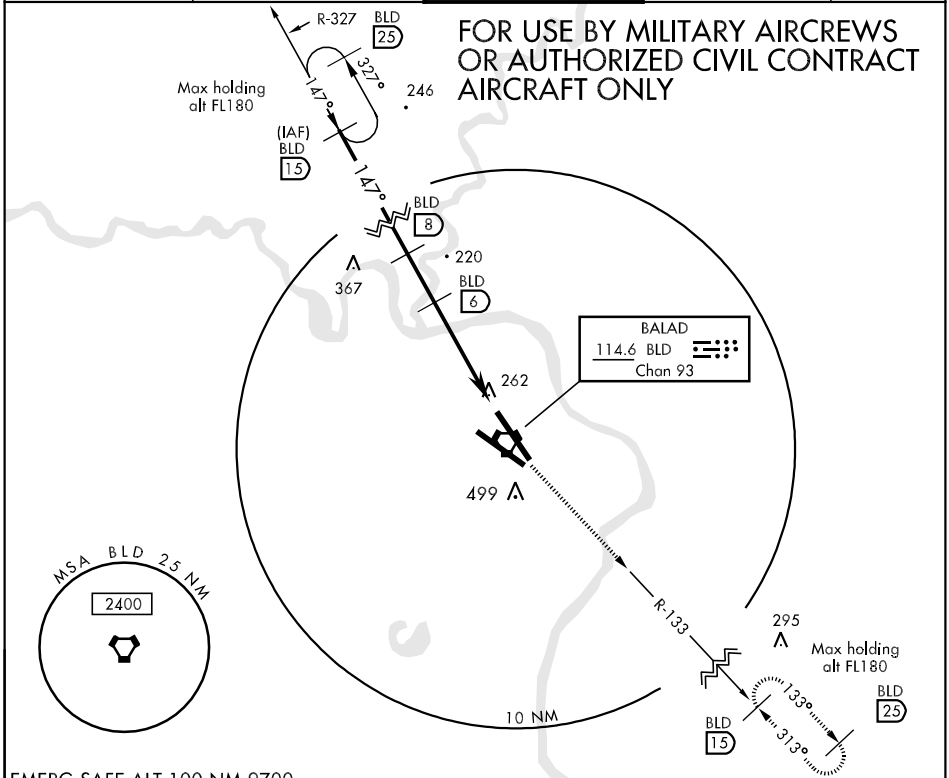
BALAD SOUTHEAST (ORBD)

⚠ * Non-Standard Lighting. Weather minimum based on NO-LIGHT criteria.

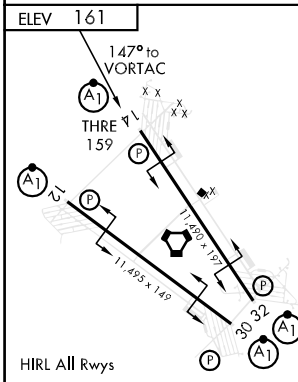


MISSED APPROACH: Track direct BLD R-133/15 DME climbing to 4000 and hold.

ATIS 247.2	BALAD SOUTHEAST APP CON 131.9 255.8	BALAD SOUTHEAST TOWER 119.875 368.4	GND CON 128.75 301.125	PAR
----------------------	---	---	----------------------------------	-----



EMERG SAFE ALT 100 NM 9700



	TA 13,000 Tlv FL150		4000 BLD R-133		BLD 15																		
<table border="1"> <thead> <tr> <th>CATEGORY</th> <th>A</th> <th>B</th> <th>C</th> <th>D</th> <th>E</th> </tr> </thead> <tbody> <tr> <td>S-TAC 14 *</td> <td>570-1600m 409 (500-1600m)</td> <td></td> <td>570-2000m 409 (500-2000m)</td> <td></td> <td>570-2400m 409(500-2400m)</td> </tr> <tr> <td>CIRCLING</td> <td>800-1600m 639 (700-1600m)</td> <td></td> <td>900-3200m 739 (800-3200m)</td> <td>900-3600m 739 (800-3600m)</td> <td>1000-4800m 839 (900-4800m)</td> </tr> </tbody> </table>	CATEGORY	A	B	C	D	E	S-TAC 14 *	570-1600m 409 (500-1600m)		570-2000m 409 (500-2000m)		570-2400m 409(500-2400m)	CIRCLING	800-1600m 639 (700-1600m)		900-3200m 739 (800-3200m)	900-3600m 739 (800-3600m)	1000-4800m 839 (900-4800m)					
CATEGORY	A	B	C	D	E																		
S-TAC 14 *	570-1600m 409 (500-1600m)		570-2000m 409 (500-2000m)		570-2400m 409(500-2400m)																		
CIRCLING	800-1600m 639 (700-1600m)		900-3200m 739 (800-3200m)	900-3600m 739 (800-3600m)	1000-4800m 839 (900-4800m)																		

BALAD, IRAQ
Amdt 1 06243

33°56'N-44°22'E

BALAD SOUTHEAST (ORBD)
TACAN RWY 14

Effective 28 SEP 2006 - 26 OCT 2006